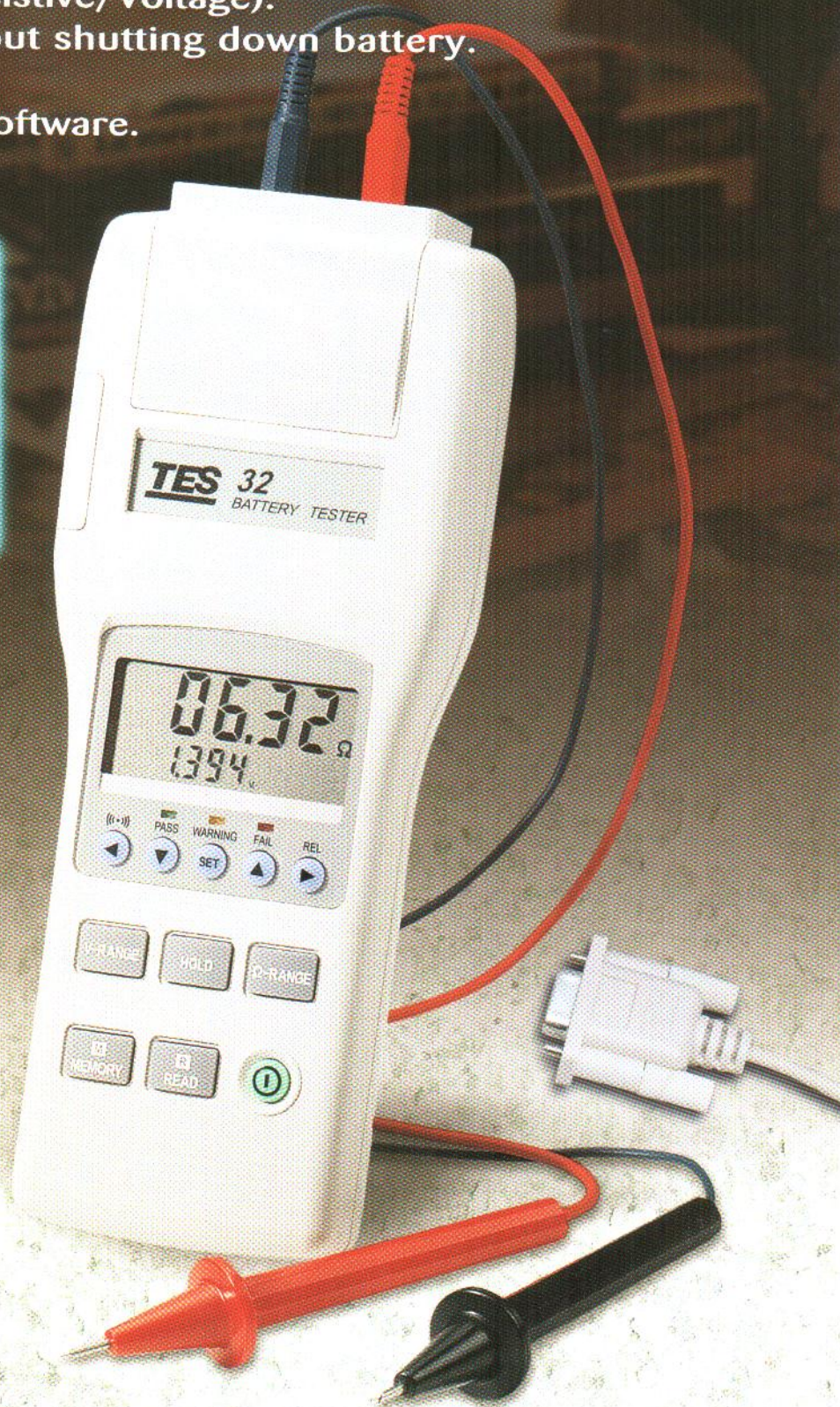
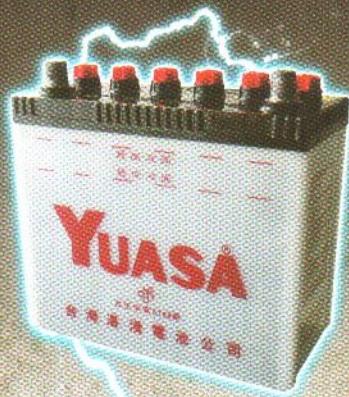
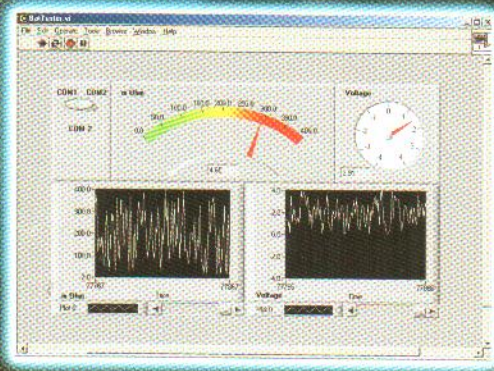


# 32 Battery Capacity Tester

- Right Device to know the "True Life" of your battery capacity. (Resistive/Voltage).
- On-line testing without shutting down battery.
- Built in Comparator.
- RS-232 interface & Software.
- Datalogging function.





# TES-32 Battery Capacity Tester (RS-232)

Storage Battery Systems Battery Capacity Testers,  
Check battery condition in seconds, with the battery in service !

## FEATURES :

- Test Condition Without Shutting Down Battery.
- Simultaneously Measure Battery Resistance, Voltage.
- Comparator Function.
- Rates Conditions as Pass, Warning, or Fail.
- Memory and Read Function.
- Compact and Lightweight.
- RS232 PC Interface.

## SPECIFICATIONS:

<b>Battery Types Tested</b>	Compact storage batteries, Alkali and lead-acid batteries.
<b>Battery Capacity</b>	0 to 500AH
<b>Resistance</b>	Ranges : 40mΩ, 400mΩ, 4Ω, 40Ω Resolution : 10μΩ, 100μΩ, 1mΩ, 10mΩ Accuracy : ± (1%reading + 8digits) on all ranges.
<b>Measurement</b>	Current : 50mA, 5mA, 500μA, 50μA Frequency : 1KHz Accuracy : ± 10%
<b>Voltage</b>	Measurement : 4V, 40V Resolution : 1mV, 10mV Accuracy : ± (0.1%rdg ± 6digits)
<b>Open Circuit Voltage</b>	≤ 6V
<b>Data Memory</b>	999 data sets
<b>Continuous Data Memory</b>	6000 data sets (only use PC download)
<b>Comparator</b>	Setting : Resistance upper and lower limits and voltage throughhold limit Memory : 99 sets of values
<b>Operating Environment</b>	0 °C to 50 °C (32 °F to 122°F), 80%RH or less, non-condensing.
<b>Maximum Input Voltage</b>	50VDC
<b>Power Supply or AC Adapter</b>	Six size AAA 1.5V
<b>Battery Life</b>	7 hours
<b>Dimensions/Weight</b>	Approx. 250(L) x 100(W) x 45(H)mm Approx. 500g including batteries.
<b>Accessories</b>	Instruction manual, Batteries, Test probe, Software, RS232 cable
<b>Optional Accessories</b>	AC adaptor (Isolated output 9VDC)



**TES ELECTRICAL ELECTRONIC CORP.**

7F, No.31 Lane 513, Rui Guang Rd., Neihu Dist, Taipei, Taiwan, R.O.C.

Tel : (02) 2799-3660 Fax : 886-2-2799-5099

E-mail : tes@ms9.hinet.net

<http://www.tes.com.tw>

شرکت صائن

[WWW.SAENCO.COM](http://WWW.SAENCO.COM)

021 88936611

