



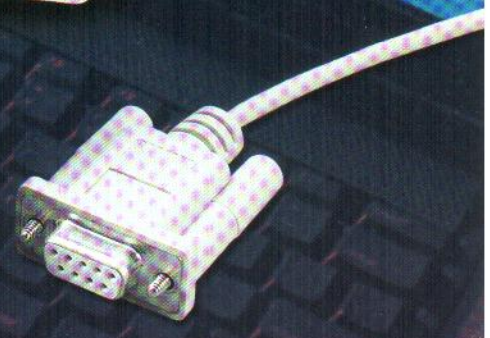
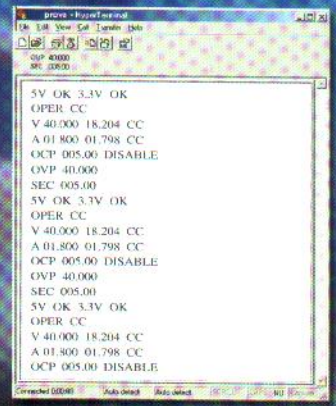
# TES

Reliable in Quality

## 8000 Programmable Power Supply

- Light weight & Easy to operate
- 1mV, 1mA Resolution
- 1+2 Output 200w
- One Programmable Output 0-40V/5A,  
Two Fixed Outputs (5V/2A, 3.3V/3A)
- Low noise and ripple (3mV rms and 3mA rms)

• Easy RS-232 Software





# TES-8000 Programmable Power Supply

## FEATURES :

- Over-Voltage, Over- Current Protection
- Built-in Buzzer Alarm
- Easy RECALL and STORE functions
- Stby/Operate Button
- English-like RS-232C commands
- OCP With Programmable Timer
- 200 Sets of Memory
- AUTO-STEP function with programmable interval
- Bi-direction RS-232C interface
- 3.8 kg/8.4 lbs weight

## SPECIFICATION :

Outputs		1 Programmable 2 Fixed
Programmable Outputs		40V/5A
Fixed Output		5V/2A, 3.3V/3A
Programmed Voltage Output (CV, Constant Voltage Mode)	Range	0~40V
	Resolution	1mV
	Accuracy	0.05%±9mV
Programmed Current Output (CC, Constant Current Mode)	Range	0~5A
	Resolution	1 mA
	Accuracy	0.2%±9mA
Voltage Readback (CC, Constant Current Mode)	Range	0.1~40V
	Resolution	1mV
	Accuracy	0.1%±12mV
Current Readback (CV, Constant Voltage Mode)	Range	0.05~5A
	Resolution	1mA
	Accuracy	0.2%±12mA
RIPPLE & NOISE	Voltage(mVrms)	3mV rms
	Current(mArms)	3mA rms
TEMPERATURE COEFFICIENT	Voltage	≤100ppm/ °C
PROTECTION FUNCTION	OCP With Programmable Timer (0.01~60Sec.)	✓
	OVP	✓
OUTPUT STBY/ OPERATE		✓
DISPLAY (STN LCD + BACK LIGHT)		✓
POWER SOURCE	AC 110V OR 220V, 50/60Hz	
ACCESSORIES	POWER CORDX1, USERS MANUALX1	
DIMENSIONS & WEIGHT	310(L)x250(W) x135(H) mm, 3.8 kgs /8.4 lbs (Approx.)	

# TES

## TES ELECTRICAL ELECTRONIC CORP.

7F, No.31 Lane 513, Rui Guang Rd., Neihu Dist, Taipei, Taiwan

Tel : (02) 2799-3660 Fax : 886-2-2799-5099

E-mail : tes@ms9.hinet.net

<http://www.tes.com.tw>

شرکت صائن

WWW.SAENCO.COM

021 88936611

