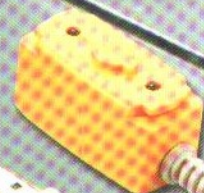
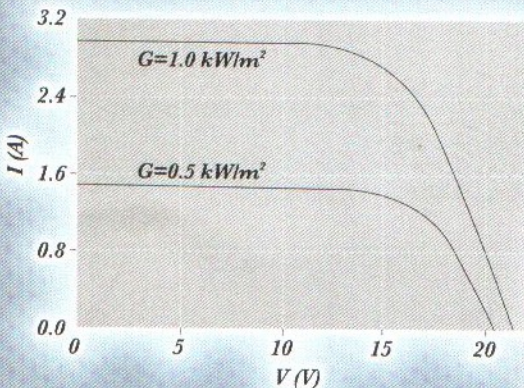
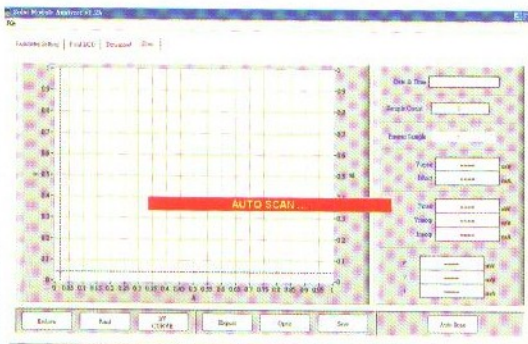




Reliable in Quality

200 Solar Module Analyzer

- I-V Curve Test for Solar Cell
- Maximum Solar Power (Pmax) Search by Auto-scan (60V, 6A)
- I-V Curve with cursor
- Calculation of Efficiency (%)





Reliable in Quality

200 Solar Module Analyzer

FEATURES :

- I-V Curve Test for Solar Cell
- Maximum Solar Power (Pmax) Search by Auto-scan (60V, 6A)
- Maximum Voltage (Vmaxp) at Pmax
- Maximum Current (Imaxp) at Pmax
- Voltage at open circuit (Vopen)
- Current at short circuit (Ishort)
- I-V curve with cursor
- Optional printer (model: 300XP) to hardcopy I-V curve
- Calculation of Efficiency (%)
- Manual single point test

Electrical Specifications (23°C±5°C)

DC Voltage:

Range	Resolution	Accuracy
0 – 10V	0.001V	±1% ± 18 dgts
10 – 60V	0.01V	±1% ± 18 dgts

DC Current:

Range	Resolution	Accuracy
0 – 1A	0.1mA	±1% ± 18 dgts
1 – 6A	1mA	±1% ± 18 dgts

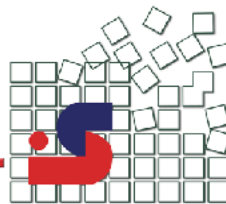
General Specifications:

Battery Type	1.2V AA rechargeable battery x 8 (2500mAh)
AC Adaptor	AC 110V or 220V input, DC 12V/ 3A output
Size	257 (L) x 155 (W) x 57 (H) mm 10.1 (L) x 6.1 (W) x 2.2 (H) inch
Weight	1160 g / 40.9 oz (batteries included)
Accessories	Users Manual x 1 1.2V AA rechargeable battery x 8 1 set of Kelvin clips (2 clips, 5A max.) USB cable x 1 AC adaptor x 1

شركة صائن

WWW.SAENCO.COM

021 88936611



TES ELECTRICAL ELECTRONIC CORP.

7F, No.31 Lane 513, Rui Guang Rd., Neihu Dist, Taipei, Taiwan

Tel : (02) 2799-3660 Fax : 886-2-2799-5099

E-mail : tes@ms9.hinet.net

<http://www.tes.com.tw>