



REAL-TIME SMALL AREA STORAGE TEMPERATURE/ HUMIDITY MONITORING

This solution realizes real-time data monitoring and alarm notification. It is suitable for real-time environmental monitoring of cold rooms, labs, small warehouses and other small-area storage environments. The gateways and Bluetooth sensors can be combined together according to your own requirements. The sensors are designed to monitor field data and transmit the data to the Gaea series gateway via Bluetooth communication, and the gateway transfers the data received to Freshliance Cloud via WiFi or 4G network. All data are globally available via the computer platform and mobile APP.



Remote data review and track via APP and computer platform



Automated data graphing, analysis and processing



Offline data re-uploaded after network recovery



SMS, email and APP Push alert



Report data details to minutes or shorter, extreme value report available



Up to 20 email/SMS alarms per day, automatically reset on the next day

Model	G100-S	G1000-S
Communication Network	Bluetooth: Sensor to gateway / WiFi: Gateway to cloud	Bluetooth: Sensor to gateway / WiFi/4G/LAN: Gateway to cloud
Power	5V/2A, Mini-USB	5V/2A, Type-C
Backup Battery	N/A	4000mAh, 3.7V/8000mAh, 3.7V
Maximum Current	≤ 90mA	
Maximum Connections	20 sensors	
Working Humidity	5%~95% RH (non-condensing)	
Communication Range	100m (Open Space)	
Working Temperature	-10°C ~ +55°C	

Model	BlueTag TH10R	BlueTag TH10R-I	BlueTag TH30R	BlueTag TH30R-I	BlueTag TH30R-ETU
Communication Distance (Open Space)	112m		100m		
Weight	85g (Main device)		90g (Main device)		
External Probes	Max. 2 probes, See External Probe List				
Built-in Sensor	-30°C~+70°C, ±0.5°C F.S.				
	0~100%RH, ±3%RH				
Temperature Units	°C, °F				
Alarms	Max. 6 alarm points				
Report	PDF/CSV				
Connection	Bluetooth 5.2				
Start Delay	0min~72h				
Logging Interval	1min~99min				
Memory Capacity	Max. 20000 readings each probe				
Device Dimensions	83mm*68mm*20.5mm				
Battery	3.7V 1000mAh rechargeable lithium battery				
Installation	Hanging, Folding stand, Magnetic Suction				

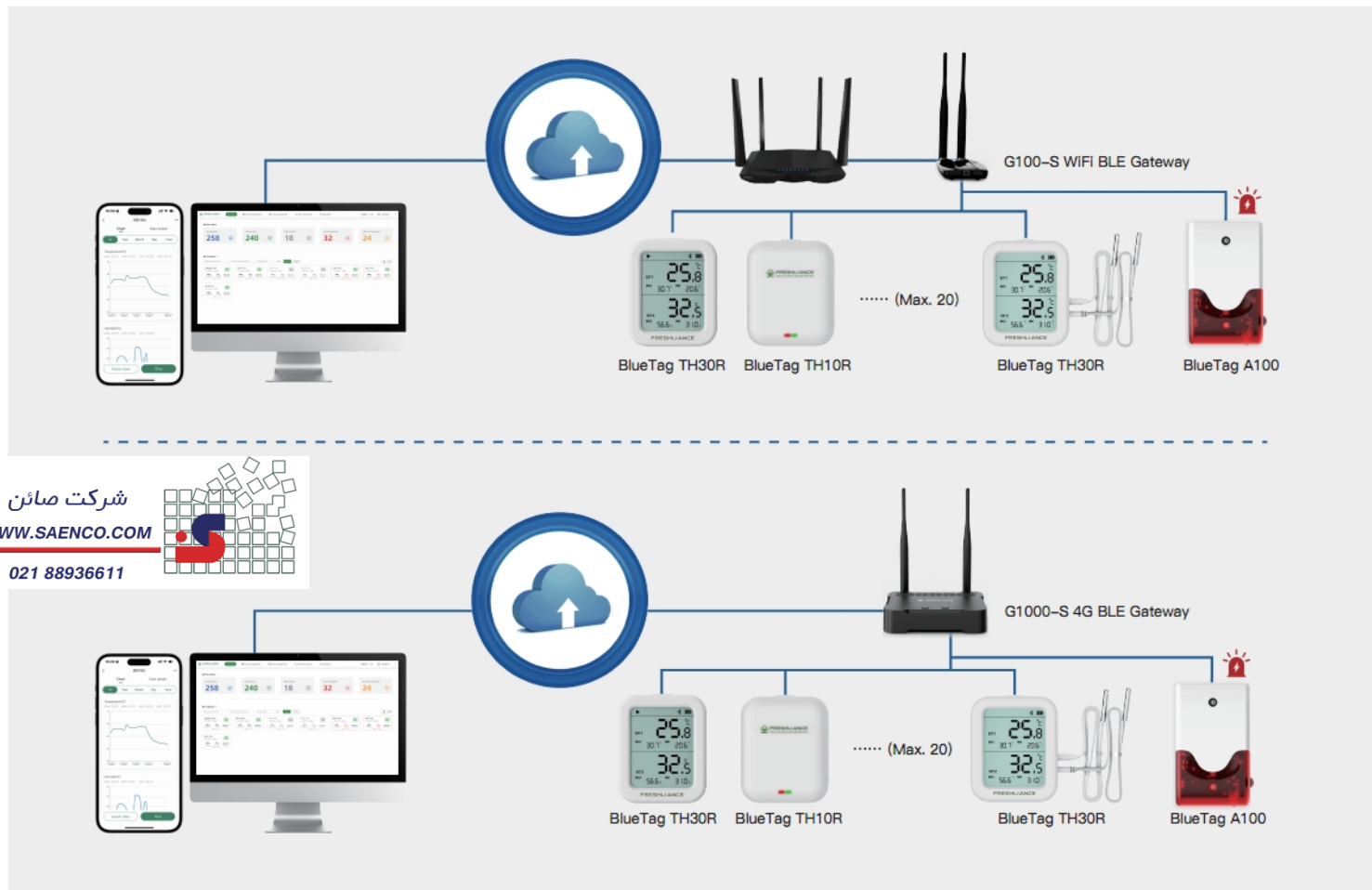
External Probe List

Probe Type	Measuring Range	Measuring Accuracy
Temperature Probe	-30°C~+70°C	±0.5°C (-30°C~+50°C) / ±1.0°C(+50°C~+70°C)
	-196°C~+200°C	±0.5°C (-100°C~+80°C) / ±1.0°C (Other)
	-90°C~+200°C	±0.3°C (-40°C~+100°C) ±0.5°C (-80°C~-40°C; +100°C~+150°C) / ±1.0°C (Other)
Temperature and Humidity Probe	-40°C~+85°C / 0~100%RH	±0.5°C F.S. ±3%RH (25°C, 20%~90%RH) / ±5%RH (Other)
Standard cable length: 2m; Customizable length available: 5m, 10m, 15m or 20m.		

APPLICATION

This system provides users a real-time environment data monitoring solution for industrial automation, engineering project, smart buildings, health care, pharmacy, laboratory, greenhouse, stock-breeding, warehouse and refrigeration storage, etc.

REAL TIME SMALL AREA STORAGE TEMPERATURE/HUMIDITY MONITORING



Freshliance Electronics Corp., Ltd. is an ISO9001-certified enterprise. It is committed to environmental logging and IOT solution development based on independent temperature verification environments. We have a professional software and hardware team in the field of Bluetooth/Lora/NFC/RF/WiFi/2G/4G/5G, etc. We strive to maintain the best quality products and service for you and are ready for your tailor-made solutions.



EN12830



GSP

DO-160